

# The Role of ERO1 $\alpha$ in Modulating Cancer Progression and Immune Escape

Brennan D. Johnson<sup>1</sup>, Werner J. Geldenhuys<sup>2,3</sup>, Lori A. Hazlehurst<sup>1,2\*</sup>

<sup>1</sup>WVU Cancer Institute, Morgantown, WV 26506, USA

<sup>2</sup>WVU School of Pharmacy, Morgantown, WV, 25606, USA

<sup>3</sup>WVU Neuroscience Institute, Morgantown, WV, 25606, USA

\*Correspondence should be addressed to Lori A. Hazlehurst; lahazlehurst@hsc.wvu.edu

**Received date:** June 29, 2020, **Accepted date:** August 10, 2020

**Copyright:** © 2020 Johnson BD, et al. This is an open-access article distributed under the terms of the Creative Commons Attribution License, which permits unrestricted use, distribution, and reproduction in any medium, provided the original author and source are credited.

## Abstract

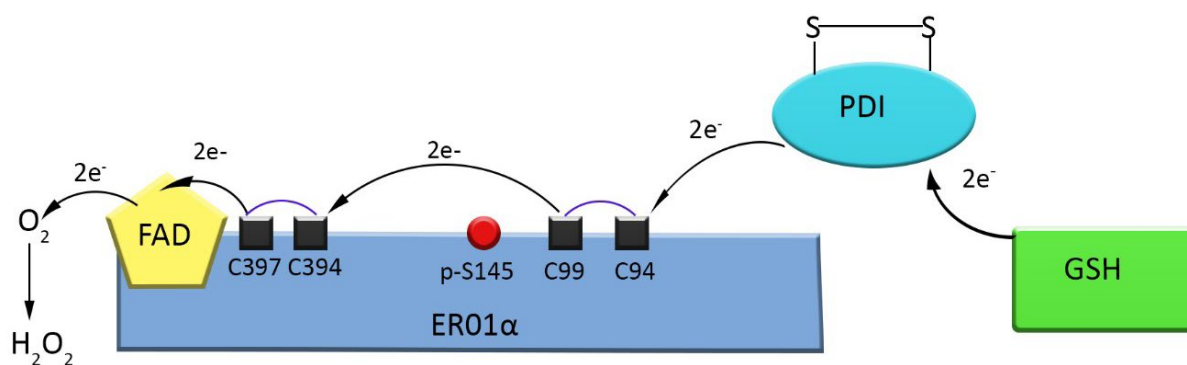
Endoplasmic reticulum oxidoreductin-1 alpha (ERO1 $\alpha$ ) was originally shown to be an endoplasmic reticulum (ER) resident protein undergoing oxidative cycles in concert with protein disulfide isomerase (PDI) to promote proper protein folding and to maintain homeostasis within the ER. ERO1 $\alpha$  belongs to the flavoprotein family containing a flavin adenine dinucleotide utilized in transferring of electrons during oxidation-reduction cycles. This family is used to maintain redox potentials and protein homeostasis within the ER. ERO1 $\alpha$ 's location and function has since been shown to exist beyond the ER. Originally thought to exist solely in the ER, it has since been found to exist in the golgi apparatus, as well as in exosomes purified from patient samples. Besides aiding in protein folding of transmembrane and secretory proteins in conjunction with PDI, ERO1 $\alpha$  is also known for formation of *de novo* disulfide bridges. Public databases, such as the Cancer Genome Atlas (TCGA) and The Protein Atlas, reveal ERO1 $\alpha$  as a poor prognostic marker in multiple disease settings. Recent evidence indicates that ERO1 $\alpha$  expression in tumor cells is a critical determinant of metastasis. However, the impact of increased ERO1 $\alpha$  expression in tumor cells extends into the tumor microenvironment. Secretory proteins requiring ERO1 $\alpha$  expression for proper folding have been implicated as being involved in immune escape through promotion of upregulation of programmed death ligand-1 (PD-L1) and stimulation of polymorphonuclear myeloid derived suppressor cells (PMN-MDSC's) via secretion of granulocytic colony stimulating factor (G-CSF). Hereby, ERO1 $\alpha$  plays a pivotal role in cancer progression and potentially immune escape; making ERO1 $\alpha$  an emerging attractive putative target for the treatment of cancer.

**Keywords:** ERO1, Cancer, ER stress, Cancer therapeutics, Immune resistance

## Introduction

The failure to eradicate minimal residual disease often located at metastatic sites and/or the bone marrow niche continues to be a clinical barrier for successful treatments in cancer [1-4]. Unfortunately, in some tumor's disease relapse is associated with a multi-drug resistant phenotype that corresponds to resistance to structurally and functionally divergent agents. Similar to conventional therapies the success of immune-oncology is limited to the occurrence of primary resistance in some patients, as well as emergence of acquired resistance [5]. Accumulating experimental evidence indicates that the tumor microenvironment plays a critical role in mediating sensitivity to targeted agents as well as immunotherapy [6,7]. Thus, to improve the gap in patient outcomes new

targets need to be validated in the context of the metastatic phenotype and the tumor microenvironment. This review will discuss the potential of ERO1 $\alpha$  as target for the treatment of cancer. Despite the endoplasmic reticulum being one of the largest cellular organelles, it was one of the last ones discovered [8]. Originally described by Emilio Veratti in 1902, it was not until the electron microscope was available that George Palade and Keith Porter made the re-discovery [9-11] capturing the structural complexities and tubular structure existing in the cytoplasm [12]. Since the re-discovery, the ER has been identified to be a continuous membranous organelle essential for protein folding, calcium storage, lipid metabolism, protein transport, post-translational modifications, and protein transport via vesicles [13]. It is composed of two main parts; smooth ER and rough ER. The rough ER is composed of ribosomes



**Figure 1:** Upon Phosphorylation of Serine 145 by FAM20C Kinase, ERO1 $\alpha$  can return to the endoplasmic reticulum (ER). Above is an illustration of the interaction occurring between active site of ERO1 $\alpha$ , PDI, and Glutathione (GSH). This reaction is also capable of occurring in the reverse direction resulting in redox equilibrium inside the ER. (Red circle is the phosphorylation site of ERO1 $\alpha$  at serine 145 via FAM20C kinase, Black squares connected by blue lines are active disulfide bridges required for redox to occur, and black arrows are representative of electron flow when ERO1 $\alpha$  is being reduced.

and continuous cisternae that have an important role in protein folding and storage, while the smooth ER is void of ribosomes and composed mainly of microtubules, and is critical for synthesis and storage of lipids. Maintaining homeostasis within the ER is essential for proper formation of desulphated bridges and ultimately, protein folding [14]. A major determinant of homeostasis occurs through oxidative enzymes of the flavin dependent endoplasmic reticulum oxidoreductin-1 (ERO1 $\alpha$ ) family [15-19] and by the buffering capacity of reduced glutathione (GSH) and oxidized glutathione (GSSG) in a 3:1-6:1 molar ratio in favor of reduced glutathione [20-22]. ERO1 $\alpha$  is known to oxidize protein disulfide isomerase (PDI) in order to form *de novo* disulfide bridges [16]. The crucial function of disulfide bridging occurring in the ER between ERO1 $\alpha$  and PDI have been well-established [23]. Briefly, the target unfolded protein within the ER can be oxidized by PDI resulting in the reduction of PDI. Oxidized ERO1 $\alpha$  can in turn lead to the recycling of PDI to the oxidized form. Reduced ERO1 $\alpha$  can be oxidized and form *de novo* disulfide bridge utilizing FAD as a cofactor leading to FADH and reduction of molecular oxygen to ROS (See Figure 1).

Cancer cells typically are under increased levels of ER stress. ER stress is most evident in secretory tumors such as multiple myeloma, breast, lung and pancreatic. However, other inducers of ER stress include hypoxia and chemotherapy. Given the importance of ER homeostasis, ERO1 $\alpha$ -PDI interaction, and formation of *de novo* disulfide bridges ERO1 $\alpha$  has emerged as a player in the regulation and tolerance of cancer cells to ER stress [24]. An increase in ER-stress can lead to two possible outcomes: 1.) unfolded protein response (UPR) once activated ultimately brings ER stress back to homeostasis via inhibition of

translation and inducing cell cycle arrest, or 2.) if ER stress is not resolved than apoptosis occurs through release of cytochrome C and caspase activation, ultimately protecting the organism from rogue cells that display misfolded proteins [25]. Despite UPR being the main pathway to ER stress resolution; UPR has also been linked to autophagic flux. Autophagy can either be inhibited or activated upon ER stress [26]. Though autophagy is related to ER stress it is not always activated under ER stress conditions. Autophagy is an orchestrated process by which misfolded proteins, damaged or aged organelles, or even mutated proteins are sequestered in an autophagosome that ultimately fuses to the lysosome leading to degradation of sequestered components [27]. Reports recently have showed that withanolide E in combination with ER stress inducers enhance apoptosis synergistically in pancreatic cancer models [28]. Multiple cancer types have been reported to have increased ER stress including multiple myeloma, lung, breast, and pancreatic [29-31]. Differences in ER stress can be driven by genetic, epigenetic, and microenvironmental heterogeneity that likely result in a range of pro-survival and anti-apoptotic responses [32]. Anticancer interventions such as chemotherapy has also been shown to modulate UPR (Unfolded protein response) though clinical implications are only starting to be understood [33,34]. Recent studies have showed that depending on the context cancer cells can utilize UPR as a resistance mechanism [35].

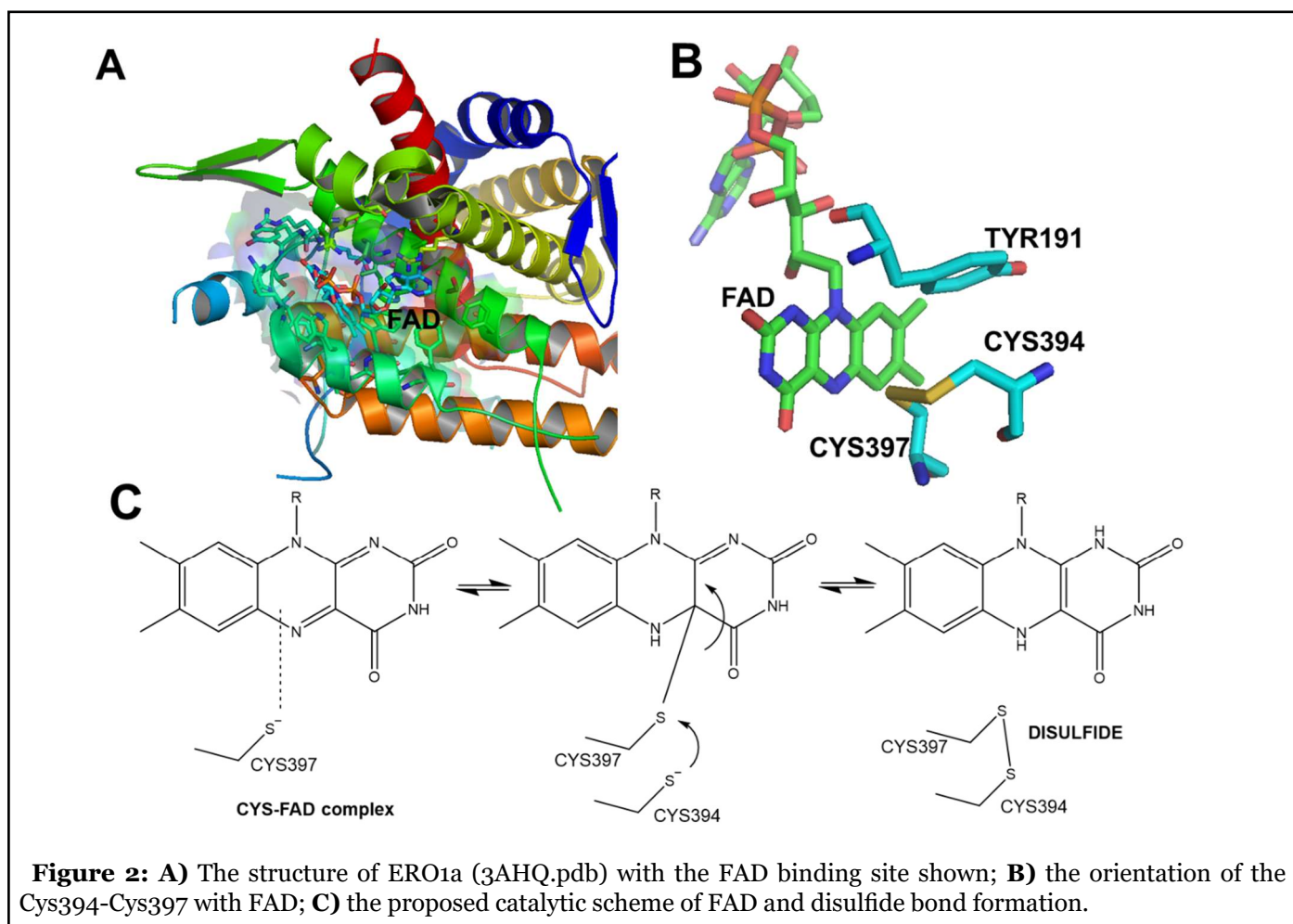
Interestingly, overexpression of ERO1 $\alpha$  tends to have a worse prognosis in multiple cancer indications; multiple myeloma [36], breast [37-39] and hepatocellular carcinoma [40], as well as lung, esophageal, diffuse B-cell lymphoma, and others according to The Cancer Genome Atlas (TCGA) and The Protein Atlas. These data indicate

that expression is increased in aggressive and/or drug resistant disease and support the premise the ERO1 $\alpha$  is a tractable target for the treatment of cancer. Below, we will delve into four specific topics that will reveal and shed light onto 1.) the structure, function, localization, and characterization of flavin containing ERO1 $\alpha$ , 2.) Disease indications, 3.) immune surveillance, and immune evasion and how they are related to ERO1 $\alpha$  and 4) chemical probes currently available to test the ERO1 $\alpha$ -PDI pathway.

### Structure, Function, Localization, and Characterization of Flavin Containing ERO1 $\alpha$

Flavoenzymes are an important classification of enzymes that utilize FAD in redox reactions to maintain enzymatic function. Specifically, ERO1 $\alpha$  promotes oxidative protein folding through PDI, producing hydrogen peroxide as a by-product and is tightly regulated to avoid futile oxidation cycles occurring in the ER [41]. There are many secretory and membrane proteins under the assistance of thiol-disulfide oxidoreductases helping form disulfide bonds in the ER [42-46]. The major players in ER oxidative reactions are ERO1 $\alpha$  and PDI; both which are conserved

from yeast to mammals [16,17,47,48]. Humans contain two ERO1 isoforms; ERO1 $\alpha$  that is expressed in almost all cell types and ERO1 $\beta$  that is only expressed in select tissues. The oxidative reaction occurring between ERO1 $\alpha$  and PDI produces hydrogen peroxide, a reactive oxygen species (ROS) [43]. Although a cell can cope with peroxides formed during basal oxidative protein folding, sometimes using them as secondary messengers in cell-signaling cascades [49] and possibly as a direct protein disulfide introducer [50,51]. If ROS production exceeds cellular capacity of antioxidants defense systems this can be harmful via introduction of ER oxidative stress [41]. ERO1 $\alpha$  is tightly regulated not only through phosphorylation state [52], but also through regulatory disulfide bridging. When disulfide bridges are formed between cysteine 94 and cysteine 99 ERO1 $\alpha$  activity exceeds WT ERO1 $\alpha$  (known as hyperactive ERO1 $\alpha$ ), whereas if cysteine 94 is bridged with cysteine 131 it leads to complete inactivity of ERO1 $\alpha$  (Inactive ERO1 $\alpha$ ) [41]. This was shown using biochemical approaches through site-directed mutagenesis in yeast. However, this provides a potential regulatory or even compensatory mechanism that ERO1 $\alpha$  can exploit when the ER is under extreme stress conditions. Hyperactive, inactive, and WT are the three forms of ERO1 $\alpha$  that have been shown to



exist in yeast. In yeast, cysteine 100, cysteine 105, cysteine 352, and cysteine 355 are required for oxidative reactions, whereas cysteines 90, 208, and 349 are dispensable for these functions [17]. Providing a mechanism by which cysteine 100-cysteine 105 directly engage in oxidative reactions; whereas cysteine 352-cysteine 355 serve directly to re-oxidize cysteine 100-cysteine 105. Allowing for ERO1p to undergo another oxidative reaction [16,17,41]. In humans, ERO1 $\alpha$  catalyzes the formation of a cysteine disulfide bond as part of the FAD containing enzyme. As can be seen in Figure 2, the cysteine 397 forms a transition complex with FAD, after which cysteine 94 attacks via a nucleophilic C-S bond to form the disulfide bond, with FAD reduced to the FADH<sub>2</sub>. Cysteine 352-Cysteine 355 bridge in yeast are equivalent to Cysteine 394-Cysteine 397 in humans and undergo the same reaction process with the cofactor FAD. The regulatory cysteine bridges in yeasts (Cys100-Cys105), is also conserved in humans, and is the disulfide bridge occurring between cysteine 94-cysteine 99. This disulfide bridge in humans are responsible for accepting electrons from PDI and transferring them to the disulfide bridge between cysteine 394-cysteine 397; ultimately allowing for cysteine 397 to perform the nucleophilic attack onto bound FAD (see Figure 1 and Figure 2).

Upon successful oxidative protein folding, basal ERO1 $\alpha$  can be shuttled into the golgi apparatus, where an interaction with FAM20C kinase occurs [52]. FAM20C is a secretory kinase founded in 2012 known for phosphorylation of the secretory protein Casein. Interestingly FAM20C prefers to use Manganese (Mn<sup>2+</sup>) instead of Magnesium (Mg<sup>2+</sup>) as compared to other kinases and is known for recognizing S-x-E/pS motif of secretory proteins [53,54]. It has also been shown to be insensitive to staurosporine, a known broad-spectrum kinase inhibitor. Recently, FAM20C was shown to phosphorylate ERO1 $\alpha$  at serine residue 145 (S145). This phosphorylation state allows for 1 of 2 scenarios to take place; 1.) ERO1 $\alpha$  can be sent extracellularly through packaging into exosomes, or 2.) Is sequestered by Erp44 (an ER transporter and chaperone protein primarily located in the endoplasmic reticulum-golgi intermediate compartment (ER-GIC) to be transferred back into the ER to undergo another oxidation cycle with PDI [55]. Zhang et al. was also able to conclude from their study that ERO1 $\alpha$  activity was increased upon phosphorylation of residue S145, and that this reaction takes place during mammalian lactation, under hypoxia, and reductive stress conditions. Originally reported to co-localize with PDI in the ER lumen [16], ERO1 $\alpha$  has more recently been shown to localize in the golgi apparatus [52], in proximity to the mitochondrial associated Endoplasmic Reticulum membranes (MAM), but only under oxidizing and normoxic conditions [56], and was identified from purified exosomes from bladder cancer cells, liver cancer cells, and squamous cell carcinoma cells (exocarto and protein atlas). More intriguing, ERO1 $\alpha$  under basal conditions is still found to be localized in the

ER despite not having a peptide signal sequence such as the C-terminus KDEL like other ER-resident proteins [57]. The absence of an ER localization signal suggests that ERO1 $\alpha$  functions may extend beyond the ER and these additional functions based on localization of the enzyme need to be discovered in order to fully understand role of ERO1 $\alpha$  in the progression of cancer. Questions still needing to be answered are 1.) What function does ERO1 $\alpha$  provide by being packaged into exosomes or by remaining in the golgi apparatus, and 2.) What function does ERO1 $\alpha$  have when localized to the MAM region? Though these questions have not been answered yet fully, there has been some insight onto the function of ERO1 $\alpha$  when localized near the MAM region. This function is to regulate Ca<sup>2+</sup> flux. Downregulation of ERO1 $\alpha$  via RNAi was found to inhibit mitochondrial Ca<sup>2+</sup> fluxes and modified mitochondrial Ca<sup>2+</sup> uniporters. However, upon overexpression of redox active ERO1 $\alpha$  increased passive Ca<sup>2+</sup> efflux from the ER was observed [58]. Calcium flux is an essential ER regulated process that is used in signaling, activation of apoptosis, and even used in cellular movement. Calcium is stored in the ER but released into the mitochondria for activation of apoptosis. Calcium can be transferred from the ER into the mitochondria via the MAM region and is required to maintain cellular homeostasis [59]. Thus, ERO1 $\alpha$  functionality beyond the scope of just protein folding in the ER as localization can play pivotal roles in regulating protein function.

## Disease Indications

Recently, ERO1 $\alpha$  has been reported as a poor prognostic indicator in multiple cancer indications. Yang et al, showed using genetic shRNA strategies for reducing the expression of ERO1 $\alpha$ , in HepG2 and Hep3B cells that high ERO1 $\alpha$  expression correlated with increased migration and invasion. Moreover, these same investigators showed that in primary patient specimens high ERO1 $\alpha$  expression was associated with poor clinicopathology of vascular invasion, metastasis, advanced Edmondson grade, and TNM stage [40]. Yang et al. were also able to conclude from their *in vivo* studies using HepG2 cells ectopically expressing ERO1 $\alpha$  that an increase in metastatic burden and poor survival *in vivo* correlated with increased ERO1 $\alpha$  expression and S1PR1, p-STAT3, and VEGF-A levels. However, upon depletion of ERO1 $\alpha$  using shRNA strategies, S1PR1, p-STAT3, and VEGF-A were also reduced.

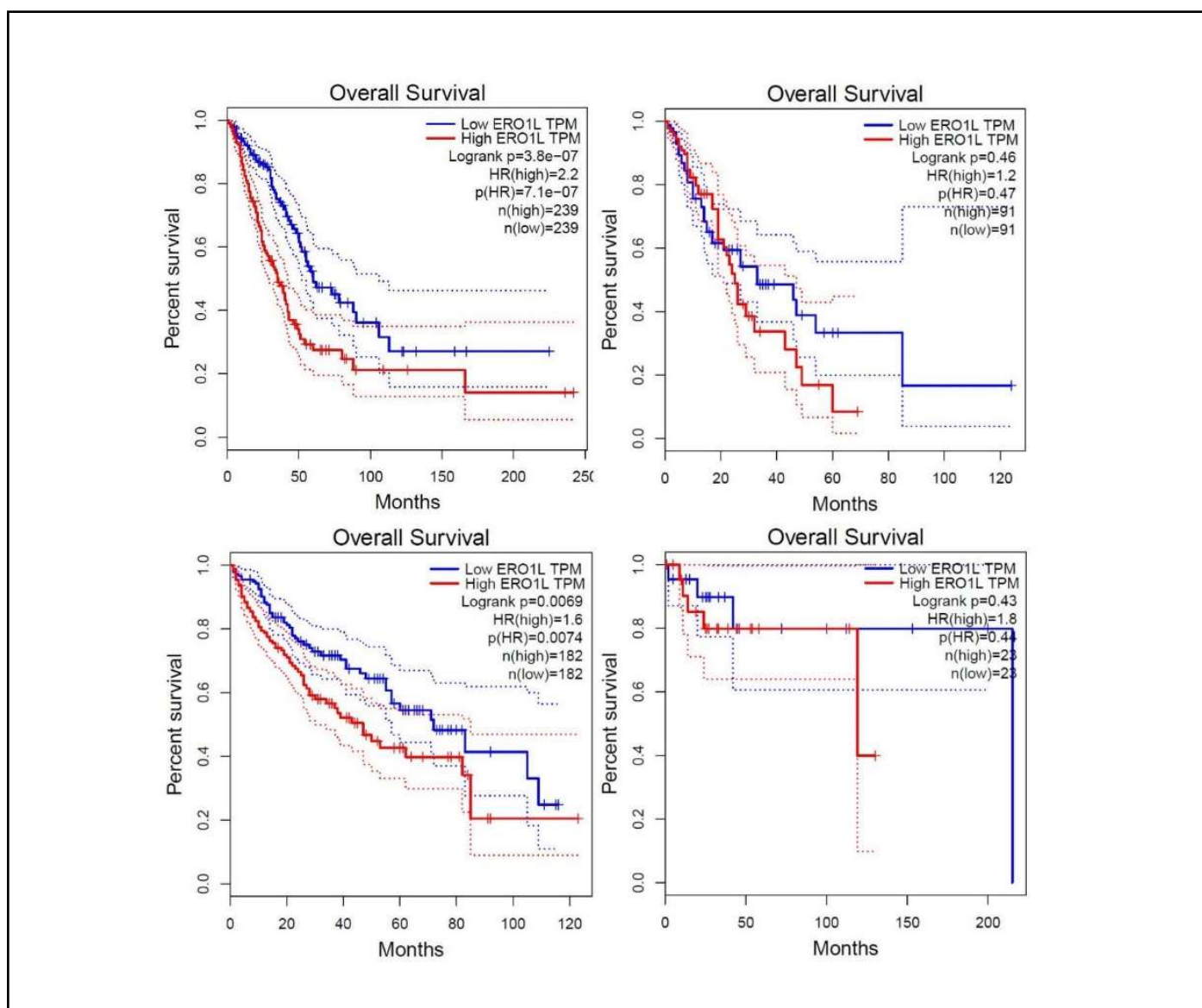
In support of clinical data indicating that ERO1 $\alpha$  expression is a poor prognostic indicator, we probed the GEPIA database that utilizes samples from TCGA and GTEX database and compiles the data into a Kaplan-Meier plot based on a single gene of interest. Using GEPIA, we determined that that ERO1 $\alpha$  is considered a bad prognostic indicator in multiple cancer indications including Lung

Adenocarcinoma, Hepatocellular Carcinoma, Esophageal Carcinoma, and Diffuse B-Cell Lymphoma (see Figure 3 and Table 1). Moreover, genetic and pharmacological studies in cell lines has indicated that ERO1 $\alpha$  expression and function contributes to an aggressive cancer phenotype (see Table 1).

The GEPIA was able to confirm that high ERO1 $\alpha$  transcript levels correlate with worse prognosis in multiple cancer indications. As mentioned previously ERO1 $\alpha$  is responsible for protein folding. More specifically, ERO1 $\alpha$  is directly involved in folding of membrane and secretory proteins [64]. Recently, ERO1 $\alpha$  has also been shown

to have a role in post-translational modification of  $\beta$ 1 integrin in colorectal cancer cell when under hypoxic conditions. When ERO1 $\alpha$  is knocked out using CRISPR Cas9 in HCT116 colorectal cancer cells and placed under hypoxic conditions it was found that the glycosylation state of integrin  $\beta$ 1 was changed and thus an attenuation of integrin  $\beta$ 1 on the cell membrane occurred; ultimately leading to contact-inhibited morphology [57]. These are just a few examples of many that ERO1 $\alpha$  is associated with cancer indications.

### Immune Surveillance and Immune Evasion Correlate with ERO1 $\alpha$ Expression



**Figure 3:** Top Left Panel represents survival data for Lung Adenocarcinoma in respect to ERO1 $\alpha$ , Top Right Panel represents Esophageal Carcinoma, Bottom Left Panel represents survival data for hepatocellular carcinoma, and Bottom Right Panel represents survival data for diffuse B-cell lymphoma. Kaplan-Meier Plots above were plotted using ERO1 $\alpha$  gene filter in GEPIA, which obtains data from TCGA and GTEx databases.

<b>Cancer Type</b>	<b>Cell Type</b>	<b>Native ERO1<math>\alpha</math> expression</b>	<b>Tools used</b>	<b>Native expression effect/silencing effect</b>	<b>Reference'(s)</b>
<i>Breast</i>	9A3, 9C1, 9C2,	Comparable to MDA-MB-231	$\uparrow$ ERO1 $\alpha$ $\downarrow$ ERO1 $\alpha$ /shRNA	$\uparrow$ PD-L1; dependent on oxidative folding	[60]
	MDA-MB-231, 9A3, 9C1, 9C2	Comparable to MDA-MB-231	$\uparrow$ ERO1 $\alpha$ $\downarrow$ ERO1 $\alpha$ /shRNA	$\uparrow$ angiogenic potential via VEGF secretion, $\uparrow$ tumor growth	[39]
	MCF10A	Comparable to MCF-7	-	Tumor associated Macrophages increased ERO1 $\alpha$ expression, causing $\uparrow$ MMP-9 expression, and $\uparrow$ invasion	[61]
	4T1	Comparable to healthy mouse mammary tissue	$\uparrow$ ERO1 $\alpha$ $\downarrow$ ERO1 $\alpha$ /shRNA	$\downarrow$ ERO1 $\alpha$ expression lead to $\downarrow$ tumor burden: $\uparrow$ ERO1 $\alpha$ $\uparrow$ MDSC's and leads to immune evasion	[37]
	4T1 Triple negative patient samples	Comparable to healthy mouse mammary tissue; Healthy human breast tissue	$\downarrow$ ERO1 $\alpha$ /shRNA	$\downarrow$ tumor burden, $\downarrow$ lung metastasis; Patients with $\uparrow$ ERO1 $\alpha$ expression had worse prognosis overall.	[38]
	MDA-MB-231	Comparable to MDA-MB-468	-	MTH-3 treatment lead to $\downarrow$ ERO1 $\alpha$ , activation of autophagy, and lead to apoptosis	[62]
<i>Hepatocellular Carcinoma</i>	Patient samples, LO2, Huh-7, HEP3B, SMMC-7721, HEPG2, MHCC-97H	ERO1 $\alpha$ expression lower in healthy tissue compared to tumor samples and cell lines	$\downarrow$ ERO1 $\alpha$ /shRNA $\uparrow$ ERO1 $\alpha$	$\downarrow$ ERO1 $\alpha$ lead to less metastasis and decreased tumor burden. $\uparrow$ ERO1 $\alpha$ lead to increase metastatic potential and increased tumor burden.	[40]
<i>Head and Neck</i>	HN4, CAL27	-	-	Tunicamycin treatment $\uparrow$ ER stress, $\uparrow$ ERO1 $\alpha$ expression, and $\downarrow$ overall tumor burden	[63]
<i>Multiple Myeloma</i>	Patient samples U266, MM1.S	Increased ERO1 $\alpha$ expression poor prognostic indicator in multiple myeloma	Chemical EN-460 PB-EN-10	Pharmacological inhibition Ero1 $\alpha$ lead apoptosis and ER stress in U266 myeloma cell line	[36]
(-) indicates no available data					

**Table 1:** Role of ERO1 $\alpha$  in cancer progression and metastatic potential in cancer.

Recently, immuno-oncology (IO) has demonstrated to be a tractable strategy for achieving durable responses. Targets and delivery approaches which may enhance IO response with respect to percentage of patients that respond remains an active area of research (rev in [65]). As IO approaches move toward combination strategies, it is essential to determine the effect of modulating novel targets such as ERO1 $\alpha$  on the immune tumor microenvironment. Immunotherapies have previously failed in lung cancer but has recently emerged as very effective new therapy [66], with the emergence of immune checkpoint blockade such as anti-PD-1 (programmed cell death-1) antibodies and anti PD-L1 (programmed cell death-ligand 1) antibodies [67]. ERO1 $\alpha$  is thought to be responsible for the processing and folding of PD-L1 and PD-1. PD-L1 is a transmembrane protein located on the cell surface of placental, vascular endothelium, pancreatic islet, muscle, and mesenchymal stem cells [68], and PD-1 is a receptor belonging to the CD28 family of receptors that is only expressed on the surface of activated T-cells, B-cells, and myeloid cells [69]. The binding of PD-L1 to PD-1 is an immune suppressive signal that inhibits autoimmunity through induction of T-cell apoptosis [70] and induces tolerance [71]. Recently, a study has shown that ERO1 $\alpha$  promotes immune escape through up-regulation of PD-L1 in breast cancer [60]. This connection is due to the intramolecular disulfide bond that exist in PD-L1 [72] and ERO1 $\alpha$  is a known contributor to folding of membrane proteins as well as introduction of disulfide bonds [16]. In this recent finding, Tanaka et al. [60], was able to demonstrate that ERO1 $\alpha$  up-regulates PD-L1 surface expression not only through oxidative folding, but also unexpectedly up-regulated PD-L1 mRNA expression through augmentation of hypoxia inducible factor-1 $\alpha$  (HIF-1 $\alpha$ ) in human triple negative breast cancer cell lines. Although this occurrence could be diminished upon knockdown of ERO1 $\alpha$  using RNA Interference (RNAi), as it led to significant attenuation of PD-L1 mediated T-cell apoptosis [60]. This provides insight towards hypoxia mediated immune resistance; specifically, in triple negative breast cancer cell lines. As shown previously in Figure 2, increased expression of ERO1 $\alpha$  is a poor prognostic indicator in lung adenocarcinoma, hepatocellular carcinoma, esophageal carcinoma, and diffuse B-cell lymphoma; However, ERO1 $\alpha$  has also be found to be a poor prognostic indicator in breast cancer by multiple researchers [37,38].

Alongside the discovery of PD-L1 and PD-1, of which Dr. Allison and Dr. Honjo won the 2018 Nobel Prize for the discovery of checkpoint blockades PD-1, PD-L1, and CTLA-4, the discovery of myeloid derived suppressor cells (MDSC's) has also had an outstanding impact clinically. Reports of MDSC's associated with tumor progression go back to the 1970's [73]. However, during the 1980's and early 1990's, laboratories of Diana Lopez, Jim Talmadge, M. Rita Young, and Hans Schreiber, demonstrated various

types of myeloid cells could inhibit immune functions in cancer [74]. There are two main groups of MDSC's; Polymorphonuclear MDSC's (PMN-MDSC's), and monocytic MDSC's (M-MDSC's). In recent years it has become clear that these two groups function differently in terms of immune suppression during tumorigenesis. M-MDSC's suppress the immune system in both antigen-specific and non-specific manners utilizing mechanisms associated with production of NO and cytokines [75]. PMN-MDSC's on the other hand can suppress immune responses primarily in an antigen-specific manner, inducing antigen specific T-cell tolerance is a major characteristic of these cells [76,77]. Recently it has been shown that tumor cells are a source of granulocytic colony stimulating factor (G-CSF) [78-81], and that production of G-CSF by tumors are responsible for recruitment of immunosuppressive PMN-MDSC's, which promote tumor growth via inhibition of antitumor immune responses [82,83]. G-CSF is a glycoprotein that functions as a hematopoietic cytokine that is secreted from immune, endothelial and bone marrow stroma cells leading to production of granulocytes (granulopoiesis), as well as contributes to mobilization of stem cells [84]. Amongst G-CSF's many functions, it is a secretory protein that's folding cycle is predicted to occur through ERO1 $\alpha$ . In a recent publication; Tanaka et al. [37] demonstrated that ERO1 $\alpha$  plays a pivotal role in PMN-MDSC induction via up-regulation of G-CSF production from cancer cells in collaboration with PDI. Tanaka et al. [37] were also able to demonstrate that reduced expression of ERO1 $\alpha$  through shRNA strategies reduced tumor growth by restoration of antitumor T-cell-mediated immunity, and ERO1 $\alpha$  overexpression promoted tumor growth *in vivo* via suppression of antitumor immunity.

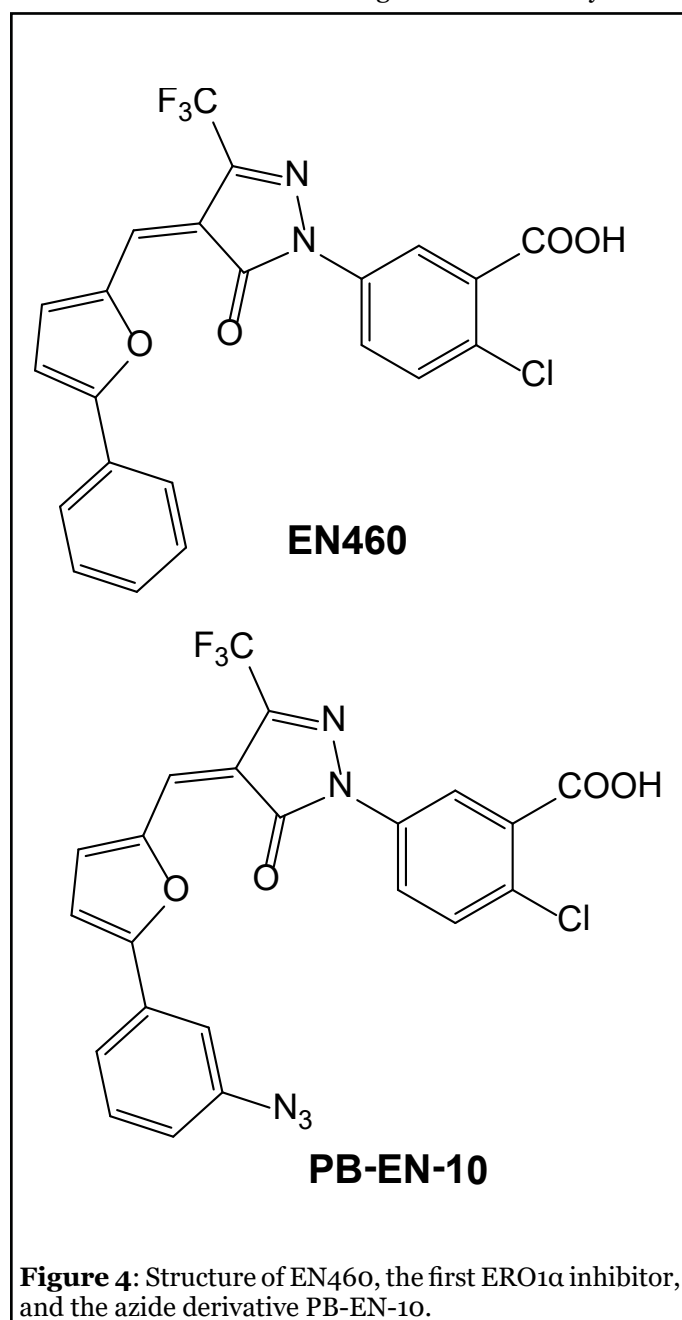
Immune system functionality has been well defined for quite some time. Despite immune system functionality being well described, cancer researchers are still discovering resistance mechanisms to cancer therapies that are utilizing the host immune system. Recently, it was found that hypoxia augmented the endogenous major histocompatibility complex I (MHC Class I) presentation in murine tumor cells [85]. MHC Class I molecules are responsible for presentation of endogenous antigens, expressed on all nucleated cells, and present protein fragment of cytosolic or nucleic nature to CD8<sup>+</sup> T-cells on the cell membrane. [86]. These antigens are peptide fragments that are intracellular and obtained from multiple pathways being approximately 8-10 amino acids long [87]. MHC Class I molecules are stabilized by ER chaperones such as ERp57, PDI, and tapasin [86]. Upon binding of the designated peptide antigen to the MHC Class I molecule, the chaperones are released and fully assembled, peptide-MHC Class I complexes leave the ER for presentation of the cell membrane [87]. Conversely, the MHC-Class I peptide complexes that fail to associate in the ER are sent to the cytosol to undergo proteasomal mediated degradation

[88,89]. Though the function of MHC Class 1 is clear, it is not clear if this function is augmented in tumors or during hypoxic conditions. HIF-1 $\alpha$  is known to be induced under hypoxic conditions and more recently has been shown to regulate expression of ERO1 $\alpha$  [90,91]. More specifically, ERO1 $\alpha$  was induced in hypoxic conditions in a HIF-1 $\alpha$  dependent manner [91]. May et al. [91] were also able to demonstrate that ERO1 $\alpha$  was not induced under hypoxic conditions in fibroblast cell lines derived from HIF-1 $\alpha$  knockout mice, revealing ERO1 $\alpha$  as a transcriptional target of HIF-1 $\alpha$ . To induce an effective antitumor immunity using cancer antigen peptide-based immunotherapy, a cancer antigen must be appropriately presented on MHC Class I molecules [37]. Kukita et al. [37] were able to determine three distinct effects that hypoxia had on MHC Class 1 presentation; 1.) expression of MHC Class I peptide complex on the cell surface was augmented, 2.) activation of antigen specific CD8<sup>+</sup> T-cells was augmented, and 3.) specific cytotoxic T-lymphocytes were capable of killing tumor cells under hypoxic conditions. They were also able to determine that ERO1 $\alpha$  was responsible for the hypoxia driven antigen presentation by MHC Class I molecules. ERO1 $\alpha$  is responsible for the disulfide bond formation of MHC Class I heavy chains. Upon depletion of ERO1 $\alpha$ , MHC Class I expression on the cell surface was also shown to be decreased, resulting in decreased cytotoxic T-lymphocyte reactivity [37]. Thus, Kukita et al [37] were able to demonstrate that ERO1 $\alpha$  plays a crucial role in hypoxia-induced oxidative folding of MHC Class I heavy chain, leading to augmentation of MHC Class I-peptide complex on the tumor cell surface and enhanced recognition by antigen specific cytotoxic T-lymphocytes. Functional MHC Class I expression is needed to induce cell death via induction of CD8<sup>+</sup>, T-lymphocytes. Despite increased MHC Class I expression in hypoxic conditions, the increased and chronic presence of cancer associated antigens may lead to T-cell exhaustion in hypoxic regions of the tumor, albeit further work is required to fully determine whether increased ERO1 $\alpha$  expression leads to T-cell exhaustion *in vivo* [92, 93]. Because inhibiting ERO1 $\alpha$  is likely to change the cytokine and chemokine profile of the tumor microenvironment, further studies are required to fully understand the effect of inhibiting ERO1 $\alpha$  on tumor mediated immune suppression.

### Inhibitors of the ERO1 Pathway

Currently pharmacologic inhibitors that target ERO1 $\alpha$  are limited. The first inhibitor of ERO1 $\alpha$ , known as EN460, and was identified through a screen of 210,960 natural compounds [94]. EN460 is specific for the reduced active form of ERO1 $\alpha$  and prevents re-oxidation [94]. Our laboratory recently demonstrated that EN460 could potentially be used to treat cancers with high ER-stress such as multiple myeloma [36]. It was also confirmed during this study that EN460 had multiple off targets;

all being flavoenzymes, or enzymes that contain flavin adenine dinucleotide (FAD). Our laboratory was also able to develop an azide derivative of EN-460, PB-EN-10, that showed similar effects [36]. The tool compound EN460 and its azide derivative PB-EN-10 are shown below in Figure 4. Having direct interactions with PDI during oxidative protein folding it seems feasible that PDI could also be targeted to inhibited ERO1 $\alpha$  mediated biological functions. PDI has also been shown to be a potential target in multiple myeloma. Targeting PDI provides its' own challenges as it has multiple isoforms being a family with greater than 20 members, and due to the multiple redox active cysteine residues present [95-98]. PDI inhibition currently via small molecules occurs through covalent catalysis and





includes the following tool set 16F16, PACMA31, KSC-34, E61, and E64FC26 [99-102]. Despite multiple known inhibitors against PDI, none have entered clinical trials for the treatment of cancer at this time. ERO1 $\alpha$  and PDI could be good targets in cancer indications if specificity could be achieved toward both enzymes, as PDI inhibitors tend to hit all PDI family members and ERO1 $\alpha$  inhibitors have the tendency to target other flavoenzymes. In conclusion ERO1 $\alpha$  is emerging as an attractive target for the treatment of cancer. Supporting evidence that credentials the target described above includes i) clinical data indicating that increased expression of the enzyme is a poor prognostic indicator in multiple cancer indications and ii) genetic strategies utilizing shRNA indicate that reducing the expression of ERO1 $\alpha$  inhibits growth and metastasis using both *in vitro* and *in vivo* model systems. However, delineation of the therapeutic window will require a drug discovery campaign to elucidate more specific and potent inhibitors to allow for further validation of the target.

## Funding

5U54GM104942-04 (Hodder), R44-CA221554 (Hazlehurst) PI NCI, and NCI 1R01CA195727-01 (Hazlehurst). The content is solely the responsibility of the authors and does not necessarily represent the official views of the National Institutes of Health.

## Conflict of Interest

The authors declare no conflict of interest.

## References

1. Abbosh C, Birkbak NJ, Swanton C. Early stage NSCLC—challenges to implementing ctDNA-based screening and MRD detection. *Nature Reviews Clinical Oncology.* 2018 Sep;15(9):577-86.
2. Chaudhuri AA, Chabon JJ, Lovejoy AF, Newman AM, Stehr H, Azad TD, et al. Early detection of molecular residual disease in localized lung cancer by circulating tumor DNA profiling. *Cancer Discovery.* 2017 Dec 1;7(12):1394-403.
3. Nair RR, Tolentino J, Hazlehurst LA. The bone marrow microenvironment as a sanctuary for minimal residual disease in CML. *Biochemical Pharmacology.* 2010 Sep 1;80(5):602-12.
4. Ootsuka S, Asami S, Sasaki T, Yoshida Y, Nemoto N, Shichino H, et al. Useful markers for detecting minimal residual disease in cases of neuroblastoma. *Biological and Pharmaceutical Bulletin.* 2008 Jun 1;31(6):1071-4.
5. Schoenfeld AJ, Hellmann MD. Acquired resistance to immune checkpoint inhibitors. *Cancer Cell.* 2020 Apr 13;37(4):443-55.
6. Bewry NN, Nair RR, Emmons MF, Boulware D, Pinilla-Ibarz J, Hazlehurst LA. Stat3 contributes to resistance toward BCR-ABL inhibitors in a bone marrow microenvironment model of drug resistance. *Molecular Cancer Therapeutics.* 2008 Oct 1;7(10):3169-75.
7. Osipov A, Saung MT, Zheng L, Murphy AG. Small molecule immunomodulation: the tumor microenvironment and overcoming immune escape. *Journal for Immunotherapy of Cancer.* 2019 Dec 1;7(1):224.
8. Westrate LM, Lee JE, Prinz WA, Voeltz GK. Form follows function: the importance of endoplasmic reticulum shape. *Annual Review of Biochemistry.* 2015 Jun 2;84:791-811.
9. Palade GE. Studies on the endoplasmic reticulum: II. Simple dispositions in cells in situ. *The Journal of Biophysical and Biochemical Cytology.* 1955 Nov 25;1(6):567.
10. Palade GE, Porter KR. Studies on the endoplasmic reticulum: I. Its identification in cells in situ. *The Journal of Experimental Medicine.* 1954 Nov 30;100(6):641.
11. Porter KR, Palade GE. Studies on the endoplasmic reticulum: III. Its form and distribution in striated muscle cells. *The Journal of Cell Biology.* 1957 Mar 25;3(2):269-300.
12. Mazzarello P, Calligaro A, Vannini V, Muscatello U. The sarcoplasmic reticulum: its discovery and rediscovery. *Nature Reviews Molecular Cell Biology.* 2003 Jan;4(1):69-74.
13. Schwarz DS, Blower MD. The endoplasmic reticulum: structure, function and response to cellular signaling. *Cellular and Molecular Life Sciences.* 2016 Jan 1;73(1):79-94.
14. Moilanen A, Korhonen K, Saaranen MJ, Ruddock LW. Molecular analysis of human Ero1 reveals novel regulatory mechanisms for oxidative protein folding. *Life Science Alliance.* 2018 Jun 1;1(3).
15. Benham AM, Cabibbo A, Fassio A, Bulleid N, Sitia R, Braakman I. The CXXCXXC motif determines the folding, structure and stability of human Ero1-L $\alpha$ . *The EMBO Journal.* 2000 Sep 1;19(17):4493-502.
16. Cabibbo A, Pagani M, Fabbri M, Rocchi M, Farmery MR, Bulleid NJ, et al. ERO1-L, a human protein that favors disulfide bond formation in the endoplasmic reticulum. *Journal of Biological Chemistry.* 2000 Feb 18;275(7):4827-33.
17. Frand AR, Kaiser CA. The ERO1 gene of yeast is required for oxidation of protein dithiols in the endoplasmic reticulum. *Molecular Cell.* 1998 Jan 1;1(2):161-70.

18. Pagani M, Fabbri M, Benedetti C, Fassio A, Pilati S, Bulleid NJ, et al. Endoplasmic reticulum oxidoreductin 1-L $\beta$  (ERO1-L $\beta$ ), a human gene induced in the course of the unfolded protein response. *Journal of Biological Chemistry.* 2000 Aug 4;275(31):23685-92.
19. Pollard MG, Travers KJ, Weissman JS. Ero1p: a novel and ubiquitous protein with an essential role in oxidative protein folding in the endoplasmic reticulum. *Molecular Cell.* 1998 Jan 1;1(2):171-82.
20. Bass R, Ruddock LW, Klappa P, Freedman RB. A major fraction of endoplasmic reticulum-located glutathione is present as mixed disulfides with protein. *Journal of Biological Chemistry.* 2004 Feb 13;279(7):5257-62.
21. Dixon BM, Heath SH, Kim R, Suh JH, Hagen TM. Assessment of endoplasmic reticulum glutathione redox status is confounded by extensive ex vivo oxidation. *Antioxidants & Redox Signaling.* 2008 May 1;10(5):963-72.
22. Hwang CJ, Sinskey AJ, Lodish HF. Oxidized redox state of glutathione in the endoplasmic reticulum. *Science.* 1992 Sep 11;257(5076):1496-502.
23. Tu BP, Weissman JS. Oxidative protein folding in eukaryotes mechanisms and consequences. *Journal of Cell Biology.* 2004 Feb 2;164(3):341-6.
24. Yadav U, Rani V, Deep G, Singh RK, Palle K. Oxidative stress in metabolic disorders: pathogenesis, prevention, and therapeutics.
25. Ron D, Walter P. Signal integration in the endoplasmic reticulum unfolded protein response. *Nature reviews Molecular Cell Biology.* 2007 Jul;8(7):519-29.
26. Rashid HO, Yadav RK, Kim HR, Chae HJ. ER stress: Autophagy induction, inhibition and selection. *Autophagy.* 2015 Nov 2;11(11):1956-77.
27. Behrends C, Sowa ME, Gygi SP, Harper JW. Network organization of the human autophagy system. *Nature.* 2010 Jul;466(7302):68-76.
28. Li X, Zhu F, Jiang J, Sun C, Zhong Q, Shen M, et al. Simultaneous inhibition of the ubiquitin-proteasome system and autophagy enhances apoptosis induced by ER stress aggravators in human pancreatic cancer cells. *Autophagy.* 2016 Sep 1;12(9):1521-37.
29. Dumartin L, Alrawashdeh W, Trabulo SM, Radon TP, Steiger K, Feakins RM, et al. ER stress protein AGR2 precedes and is involved in the regulation of pancreatic cancer initiation. *Oncogene.* 2017 Jun;36(22):3094-103.
30. Serrano-Negrón JE, Zhang Z, Rivera-Ruiz AP, Banerjee A, Romero-Nutz EC, Sánchez-Torres N, et al. Tunicamycin-induced ER stress in breast cancer cells neither expresses GRP78 on the surface nor secretes it into the media. *Glycobiology.* 2018 Feb;28(2):61-8.
31. Zhang Y, Liu R, Ni M, Gill P, Lee AS. Cell surface relocalization of the endoplasmic reticulum chaperone and unfolded protein response regulator GRP78/BiP. *Journal of Biological Chemistry.* 2010 May 14;285(20):15065-75.
32. Cubillos-Ruiz JR, Bettigole SE, Glimcher LH. Tumorigenic and immunosuppressive effects of endoplasmic reticulum stress in cancer. *Cell.* 2017 Feb 9;168(4):692-706.
33. Rutkowski DT, Arnold SM, Miller CN, Wu J, Li J, Gunnison KM, et al. Adaptation to ER stress is mediated by differential stabilities of pro-survival and pro-apoptotic mRNAs and proteins. *PLoS Biol.* 2006 Nov 7;4(11):e374.
34. Wu J, Ruas JL, Estall JL, Rasbach KA, Choi JH, Ye L, et al. The unfolded protein response mediates adaptation to exercise in skeletal muscle through a PGC-1 $\alpha$ /ATF6 $\alpha$  complex. *Cell Metabolism.* 2011 Feb 2;13(2):160-9.
35. Travers KJ, Patil CK, Wodicka L, Lockhart DJ, Weissman JS, Walter P. Functional and genomic analyses reveal an essential coordination between the unfolded protein response and ER-associated degradation. *Cell.* 2000 Apr 28;101(3):249-58.
36. Hayes KE, Batsomboon P, Chen WC, Johnson BD, Becker A, Eschrich S, et al. Inhibition of the FAD containing ER oxidoreductin 1 (Ero1) protein by EN-460 as a strategy for treatment of multiple myeloma. *Bioorganic & Medicinal Chemistry.* 2019 Apr 15;27(8):1479-88.
37. Kukita K, Tamura Y, Tanaka T, Kajiwara T, Kutomi G, Saito K, et al. Cancer-associated oxidase ERO1- $\alpha$  regulates the expression of MHC class I molecule via oxidative folding. *The Journal of Immunology.* 2015 May 15;194(10):4988-96.
38. Kutomi G, Tamura Y, Tanaka T, Kajiwara T, Kukita K, Ohmura T, et al. Human endoplasmic reticulum oxidoreductin 1- $\alpha$  is a novel predictor for poor prognosis of breast cancer. *Cancer Science.* 2013 Aug;104(8):1091-6.
39. Tanaka T, Kutomi G, Kajiwara T, Kukita K, Kochin V, Kanaseki T, et al. Cancer-associated oxidoreductase ERO1- $\alpha$  drives the production of VEGF via oxidative protein folding and regulating the mRNA level. *British Journal of Cancer.* 2016 May;114(11):1227-34.
40. Yang S, Yang C, Yu F, Ding W, Hu Y, Cheng F, et al. Endoplasmic reticulum resident oxidase ERO1-L $\alpha$  promotes hepatocellular carcinoma metastasis and angiogenesis through the S1PR1/STAT3/VEGF-A pathway. *Cell Death & Disease.* 2018 Oct 30;9(11):1-4.

41. Inaba K, Masui S, Iida H, Vavassori S, Sitia R, Suzuki M. Crystal structures of human Ero1 $\alpha$  reveal the mechanisms of regulated and targeted oxidation of PDI. *The EMBO Journal.* 2010 Oct 6;29(19):3330-43.
42. Alanen HI, Williamson RA, Howard MJ, Hatahet FS, Salo KE, Kauppila A, et al. ERp27, a new non-catalytic endoplasmic reticulum-located human protein disulfide isomerase family member, interacts with ERp57. *Journal of Biological Chemistry.* 2006 Nov 3;281(44):33727-38.
43. Gross E, Sevier CS, Heldman N, Vitu E, Bentzur M, Kaiser CA, et al. Generating disulfides enzymatically: reaction products and electron acceptors of the endoplasmic reticulum thiol oxidase Ero1p. *Proceedings of the National Academy of Sciences.* 2006 Jan 10;103(2):299-304.
44. Hatahet F, Ruddock LW. Protein disulfide isomerase: a critical evaluation of its function in disulfide bond formation. *Antioxidants & Redox Signaling.* 2009 Nov 1;11(11):2807-50.
45. Sevier CS, Kaiser CA. Disulfide transfer between two conserved cysteine pairs imparts selectivity to protein oxidation by Ero1. *Molecular Biology of the Cell.* 2006 May;17(5):2256-66.
46. Sevier CS, Kaiser CA. Conservation and diversity of the cellular disulfide bond formation pathways. *Antioxidants & Redox Signaling.* 2006 May 1;8(5-6):797-811.
47. Fagioli C, Mezghrani A, Sitia R. Reduction of interchain disulfide bonds precedes the dislocation of Ig- $\mu$  chains from the endoplasmic reticulum to the cytosol for proteasomal degradation. *Journal of Biological Chemistry.* 2001 Nov 2;276(44):40962-7.
48. Mezghrani A, Fassio A, Benham A, Simmen T, Braakman I, Sitia R. Manipulation of oxidative protein folding and PDI redox state in mammalian cells. *The EMBO Journal.* 2001 Nov 15;20(22):6288-96.
49. Shimizu Y, Hendershot LM. Oxidative folding: cellular strategies for dealing with the resultant equimolar production of reactive oxygen species. *Antioxidants & Redox Signaling.* 2009 Sep 1;11(9):2317-31.
50. Karala AR, Lappi AK, Saaranen MJ, Ruddock LW. Efficient peroxide-mediated oxidative refolding of a protein at physiological pH and implications for oxidative folding in the endoplasmic reticulum. *Antioxidants & Redox Signaling.* 2009 May 1;11(5):963-70.
51. Karala AR, Psarrakos P, Ruddock LW, Klappa P. Protein disulfide isomerases from *C. elegans* are equally efficient at thiol-disulfide exchange in simple peptide-based systems but show differences in reactivity towards protein substrates. *Antioxidants & Redox Signaling.* 2007 Nov 1;9(11):1815-24.
52. Zhang J, Zhu Q, Wang XE, Yu J, Chen X, Wang J, et al. Secretory kinase Fam20C tunes endoplasmic reticulum redox state via phosphorylation of Ero1 $\alpha$ . *The EMBO Journal.* 2018 Jul 13;37(14):e98699.
53. Tagliabracci VS, Engel JL, Wen J, Wiley SE, Worby CA, Kinch LN, et al. Secreted kinase phosphorylates extracellular proteins that regulate biomineralization. *Science.* 2012 Jun 1;336(6085):1150-3.
54. Tagliabracci VS, Pinna LA, Dixon JE. Secreted protein kinases. *Trends in Biochemical Sciences.* 2013 Mar 1;38(3):121-30.
55. Zhang L, Niu Y, Zhu L, Fang J, Wang L, Wang CC. Different interaction modes for protein-disulfide isomerase (PDI) as an efficient regulator and a specific substrate of endoplasmic reticulum oxidoreductin-1 $\alpha$  (Ero1 $\alpha$ ). *Journal of Biological Chemistry.* 2014 Nov 7;289(45):31188-99.
56. Gilady SY, Bui M, Lynes EM, Benson MD, Watts R, Vance JE, et al. Ero1 $\alpha$  requires oxidizing and normoxic conditions to localize to the mitochondria-associated membrane (MAM). *Cell Stress and Chaperones.* 2010 Sep 1;15(5):619-29.
57. Takei N, Yoneda A, Sakai-Sawada K, Kosaka M, Minomi K, Tamura Y. Hypoxia-inducible ERO1 $\alpha$  promotes cancer progression through modulation of integrin- $\beta$ 1 modification and signalling in HCT116 colorectal cancer cells. *Scientific Reports.* 2017 Aug 24;7(1):1-1.
58. Anelli T, Alessio M, Bachi A, Bergamelli L, Bertoli G, Camerini S, et al. Thiol-mediated protein retention in the endoplasmic reticulum: the role of ERp44. *The EMBO journal.* 2003 Oct 1;22(19):5015-22.
59. Szymański J, Janikiewicz J, Michalska B, Patalas-Krawczyk P, Perrone M, Ziółkowski W, et al. Interaction of mitochondria with the endoplasmic reticulum and plasma membrane in calcium homeostasis, lipid trafficking and mitochondrial structure. *International Journal of Molecular Sciences.* 2017 Jul;18(7):1576.
60. Tanaka T, Kutomi G, Kajiwara T, Kukita K, Kochin V, Kanaseki T, et al. Cancer-associated oxidoreductase ERO1- $\alpha$  promotes immune escape through up-regulation of PD-L1 in human breast cancer. *Oncotarget.* 2017 Apr 11;8(15):24706.
61. Lee S, Lee E, Ko E, Ham M, Lee HM, Kim ES, et al. Tumor-associated macrophages secrete CCL2 and induce the invasive phenotype of human breast epithelial cells through upregulation of ERO1- $\alpha$  and MMP-9. *Cancer Letters.* 2018 Nov 28;437:25-34.
62. Chang LC, Hsieh MT, Yang JS, Lu CC, Tsai FJ, Tsao JW, et al. Effect of bis (hydroxymethyl) alkanooate curcuminoid derivative MTH-3 on cell cycle arrest,

apoptotic and autophagic pathway in triple-negative breast adenocarcinoma MDA-MB-231 cells: An in vitro study. *International Journal of Oncology.* 2017 Dec 31;52(1):67-76.

63. Wang Y, Zhang L, He Z, Deng J, Zhang Z, Liu L, et al. Tunicamycin induces ER stress and inhibits tumorigenesis of head and neck cancer cells by inhibiting N-glycosylation. *American Journal of Translational Research.* 2020;12(2):541.

64. Wang PF, Veine DM, Ahn SH, Williams CH. A stable mixed disulfide between thioredoxin reductase and its substrate, thioredoxin: preparation and characterization. *Biochemistry.* 1996 Apr 16;35(15):4812-9.

65. Goldberg MS. Improving cancer immunotherapy through nanotechnology. *Nature Reviews Cancer.* 2019 Oct;19(10):587-602.

66. Steven A, Fisher SA, Robinson BW. Immunotherapy for lung cancer. *Respirology.* 2016 Jul;21(5):821-33.

67. Apolo AB, Infante JR, Balmanoukian A, Patel MR, Wang D, Kelly K, et al. Avelumab, an anti-programmed death-ligand 1 antibody, in patients with refractory metastatic urothelial carcinoma: results from a multicenter, phase Ib study. *Journal of Clinical Oncology.* 2017 Jul 1;35(19):2117.

68. Patel SP, Kurzrock R. PD-L1 expression as a predictive biomarker in cancer immunotherapy. *Molecular Cancer Therapeutics.* 2015 Apr 1;14(4):847-56.

69. Zang X, Allison JP. The B7 family and cancer therapy: costimulation and coinhibition. *Clinical Cancer Research.* 2007 Sep 15;13(18):5271-9.

70. Freeman GJ, Long AJ, Iwai Y, Bourque K, Chernova T, Nishimura H, et al. Engagement of the PD-1 immunoinhibitory receptor by a novel B7 family member leads to negative regulation of lymphocyte activation. *The Journal of Experimental Medicine.* 2000 Oct 2;192(7):1027-34.

71. Keir ME, Liang SC, Guleria I, Latchman YE, Qipo A, Albacker LA, et al. Tissue expression of PD-L1 mediates peripheral T cell tolerance. *Journal of Experimental Medicine.* 2006 Apr 17;203(4):883-95.

72. Talmadge JE, Gabrilovich DI. History of myeloid-derived suppressor cells. *Nature Reviews Cancer.* 2013 Oct;13(10):739-52.

73. Gabrilovich D, Ishida T, Oyama T, Ran S, Kravtsov V, Nadaf S, et al. Vascular Endothelial Growth Factor Inhibits the Development of Dendritic Cells and Dramatically

Affects the Differentiation of Multiple Hematopoietic Lineages In Vivo: Presented in part at the Keystone Symposium "Cellular and Molecular Biology of Dendritic Cells," Santa Fe, NM, March 3-9, 1998, and at the annual meeting of the American Association for Cancer Research, March 28-April 1, 1998. *Blood, The Journal of the American Society of Hematology.* 1998 Dec 1;92(11):4150-66.

74. Gabrilovich DI, Bronte V, Chen SH, Colombo MP, Ochoa A, Ostrand-Rosenberg S, et al. The terminology issue for myeloid-derived suppressor cells. *Cancer Research.* 2007 Jan 1;67(1):425-.

75. Koehn BH, Apostolova P, Haverkamp JM, Miller JS, McCullar V, Tolar J, et al. GVHD-associated, inflammasome-mediated loss of function in adoptively transferred myeloid-derived suppressor cells. *Blood, The Journal of the American Society of Hematology.* 2015 Sep 24;126(13):1621-8.

76. Marigo I, Bosio E, Solito S, Mesa C, Fernandez A, Dolcetti L, et al. Tumor-induced tolerance and immune suppression depend on the C/EBP $\beta$  transcription factor. *Immunity.* 2010 Jun 25;32(6):790-802.

77. Asano Y, Yokoyama T, Shibata S, Kobayashi S, Shimoda K, Nakashima H, et al. Effect of the chimeric soluble granulocyte colony-stimulating factor receptor on the proliferation of leukemic blast cells from patients with acute myeloblastic leukemia. *Cancer Research.* 1997 Aug 15;57(16):3395-7.

78. Chakraborty A, Guha S. Granulocyte colony-stimulating factor/granulocyte colony-stimulating factor receptor biological axis promotes survival and growth of bladder cancer cells. *Urology.* 2007 Jun 1;69(6):1210-5.

79. Joshita S, Nakazawa K, Sugiyama Y, Kamijo A, Matsubayashi K, Miyabayashi H, Furuta K, Kitano K, Kawa S. Granulocyte-colony stimulating factor-producing pancreatic adenocarcinoma showing aggressive clinical course. *Internal Medicine.* 2009;48(9):687-91.

80. Savarese TM, Mitchell K, McQuain C, Campbell CL, Guardiani R, Wu J, et al. Coexpression of granulocyte colony-stimulating factor and its receptor in primary ovarian carcinomas. *Cancer letters.* 2001 Jan 10;162(1):105-15.

81. Abrams SI, Waight JD. Identification of a G-CSF-Granulocytic MDSC axis that promotes tumor progression. *Oncoimmunology.* 2012 Jul 1;1(4):550-1.

82. Waight JD, Hu Q, Miller A, Liu S, Abrams SI. Tumor-derived G-CSF facilitates neoplastic growth through a granulocytic myeloid-derived suppressor cell-dependent mechanism. *PloS one.* 2011 Nov 16;6(11):e27690.

83. Pedersen CC, Borup R, Fischer-Nielsen A, Mora-Jensen H, Fossum A, Cowland JB, et al. Changes in gene expression during G-CSF-induced emergency granulopoiesis in humans. *The Journal of Immunology.* 2016 Sep 1;197(5):1989-99.
84. Kajiwarra T, Tanaka T, Kukita K, Kutomi G, Saito K, Okuya K, et al. Hypoxia augments MHC class I antigen presentation via facilitation of ERO1- $\alpha$ -mediated oxidative folding in murine tumor cells. *European Journal of Immunology.* 2016 Dec;46(12):2842-51.
85. Neeffes J, Jongsma ML, Paul P, Bakke O. Towards a systems understanding of MHC class I and MHC class II antigen presentation. *Nature Reviews Immunology.* 2011 Dec;11(12):823-36.
86. Vyas JM, Van der Veen AG, Ploegh HL. The known unknowns of antigen processing and presentation. *Nature Reviews Immunology.* 2008 Aug;8(8):607-18.
87. Hughes EA, Hammond C, Cresswell P. Misfolded major histocompatibility complex class I heavy chains are translocated into the cytoplasm and degraded by the proteasome. *Proceedings of the National Academy of Sciences.* 1997 Mar 4;94(5):1896-901.
88. Koopmann JO, Albring J, Hüter E, Bulbuc N, Spee P, Neeffes J, et al. Export of antigenic peptides from the endoplasmic reticulum intersects with retrograde protein translocation through the Sec61p channel. *Immunity.* 2000 Jul 1;13(1):117-27.
89. Gess B, Hofbauer KH, Wenger RH, Lohaus C, Meyer HE, Kurtz A. The cellular oxygen tension regulates expression of the endoplasmic oxidoreductase ERO1- $\alpha$ . *European Journal of Biochemistry.* 2003 May;270(10):2228-35.
90. May D, Itin A, Gal O, Kalinski H, Feinstein E, Keshet E. ERO1- $\alpha$  plays a key role in a HIF-1-mediated pathway to improve disulfide bond formation and VEGF secretion under hypoxia: implication for cancer. *Oncogene.* 2005 Feb;24(6):1011-20.
91. Mueller SN, Ahmed R. High antigen levels are the cause of T cell exhaustion during chronic viral infection. *Proceedings of the National Academy of Sciences.* 2009 May 26;106(21):8623-8.
92. Richter K, Brocker T, Oxenius A. Antigen amount dictates CD8+ T-cell exhaustion during chronic viral infection irrespective of the type of antigen presenting cell. *European Journal of Immunology.* 2012 Sep;42(9):2290-304.
93. Blais JD, Chin KT, Zito E, Zhang Y, Heldman N, Harding HP, et al. A small molecule inhibitor of endoplasmic reticulum oxidation 1 (ERO1) with selectively reversible thiol reactivity. *Journal of Biological Chemistry.* 2010 Jul 2;285(27):20993-1003.
94. Edman JC, Ellis L, Blacher RW, Roth RA, Rutter WJ. Sequence of protein disulphide isomerase and implications of its relationship to thioredoxin. *Nature.* 1985 Sep 19;317(6034):267-70.
95. Foster CK, Thorpe C. Challenges in the evaluation of thiol-reactive inhibitors of human protein disulfide isomerase. *Free Radical Biology and Medicine.* 2017 Jul 1;108:741-9.
96. Watanabe MM, Laurindo FR, Fernandes DC. Methods of measuring protein disulfide isomerase activity: a critical overview. *Frontiers in Chemistry.* 2014 Sep 3;2:73.
97. Yang S, Shergalis A, Lu D, Kyani A, Liu Z, Ljungman M, et al. Design, synthesis, and biological evaluation of novel allosteric protein disulfide isomerase inhibitors. *Journal of Medicinal Chemistry.* 2019 Feb 13;62(7):3447-74.
98. Cole KS, Grandjean JM, Chen K, Witt CH, O'Day J, Shoulders MD, et al. Characterization of an A-site selective protein disulfide isomerase A1 inhibitor. *Biochemistry.* 2018 Mar 9;57(13):2035-43.
99. Hoffstrom BG, Kaplan A, Letso R, Schmid RS, Turmel GJ, Lo DC, et al. Inhibitors of protein disulfide isomerase suppress apoptosis induced by misfolded proteins. *Nature Chemical Biology.* 2010 Dec;6(12):900-6.
100. Robinson RM, Reyes L, Duncan RM, Bian H, Strobel ED, Hyman SL, et al. Tuning isoform selectivity and bortezomib sensitivity with a new class of alkenyl indene PDI inhibitor. *European Journal of Medicinal Chemistry.* 2020 Jan 15;186:111906.
101. Xu S, Butkevich AN, Yamada R, Zhou Y, Debnath B, Duncan R, et al. Discovery of an orally active small-molecule irreversible inhibitor of protein disulfide isomerase for ovarian cancer treatment. *Proceedings of the National Academy of Sciences.* 2012 Oct 2;109(40):16348-53.
102. Kim KM, An AR, Park HS, Jang KY, Moon WS, Kang MJ, et al. Combined expression of protein disulfide isomerase and endoplasmic reticulum oxidoreductin 1  $\alpha$  is a poor prognostic marker for non small cell lung cancer. *Oncology Letters.* 2018 Nov 1;16(5):5753-60.