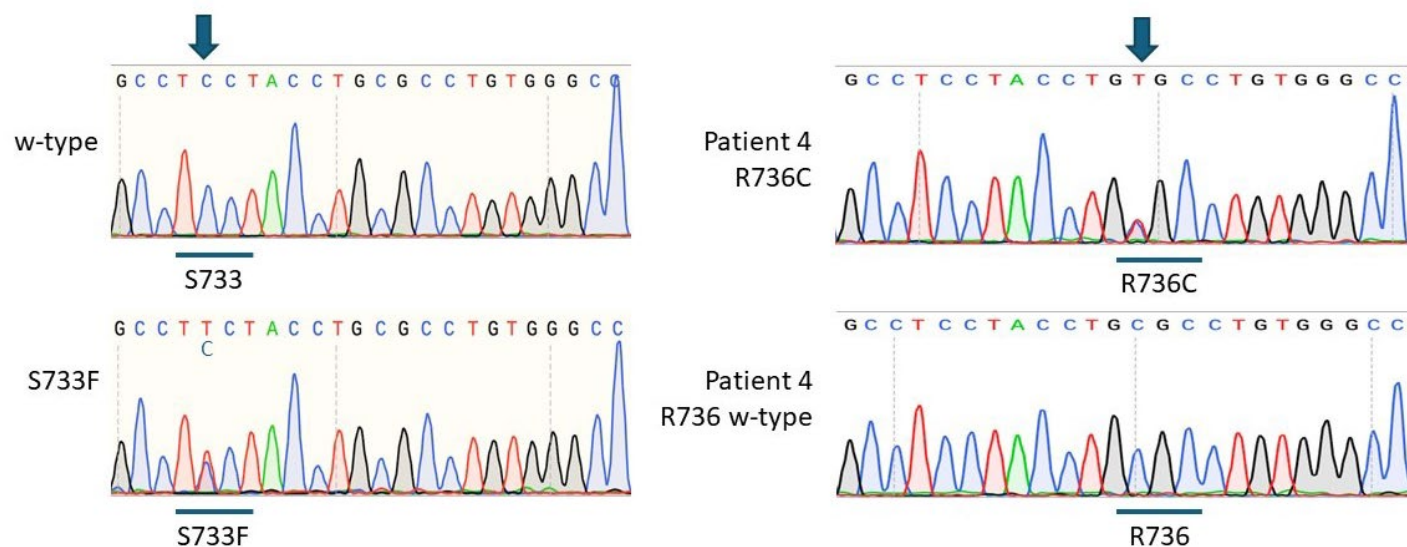


Supplementary Figure 1.



Supplementary Figure 1. Electropherograms of iPSC lines before and after CRISPR/Cas9 editing. *Left:* Introduction of the *TCIRG1* S733F mutation into a healthy volunteer-derived iPSC line. *Right:* Correction of the *TCIRG1* R736C mutation in Patient 4-derived iPSCs.